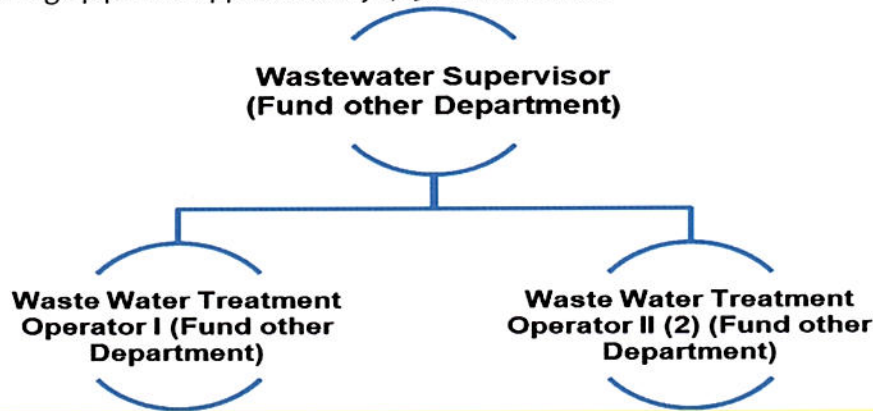




City of Ontario Biennial Budget 2011-2013

STORM

The Storm Drainage system is maintained by the Utility Maintenance Department and Street Department as there are no employees budgeted directly into the Storm Drain Department, hours worked for storm projects are coded directly to the department. The shared responsibility maintains approximately 45.68 miles of storm drainage pipe and approximately 1,250 catch basins.



City of Ontario									
ADOPTED 2011-2013 BIENNIAL BUDGET									
2007-2009	2009-2011	2009-2011	Account	Description	2011-13	2011-13	2011-13	2011-13	
Actual	Budget	Est. Actual	Number		FTE	Requested	Proposed	Approved	Adopted
			115	STORM SEWER FUND					
				STORM					
-	58,000	-	406000	AVAILABLE CASH ON HAND		-	-	-	-
-	-	12,000	458130	TRANSF FR SEWER FUND (LN)		-	-	-	-
202,652	210,000	205,026	466000	STORM WATER REV		204,978	205,026	205,026	205,026
-	-	-	469200	MISC COLLECTIONS		51,778	41,961	41,961	41,961
202,652	268,000	217,026		STORM		256,756	246,987	246,987	246,987
202,652	268,000	217,026	000	STORM FUND REVENUES		256,756	246,987	246,987	246,987
			170	STORM PAYROLL RELATED EXPENSES					
24,324	38,800	30,000	511000	WAGES & SALARIES	0.15	16,884	16,884	30,000	30,000
-	-	4,420	512000	PART-TIME EMPLOYEES		-	-	-	-
-	-	594	513000	OVERTIME		-	-	-	-
-	-	38	514000	EMPLOYER-PAID EMPLOYEE BE		-	-	-	-
7,753	6,000	11,746	514100	MEDICAL INSURANCE CO-PAY		5,688	5,688	5,688	5,688
26	700	28	515000	WORKMANS COMP		610	610	1,065	1,065
5,369	8,150	5,047	516000	RETIREMENT-EMPLR EXP		3,018	3,018	5,355	5,355
-	-	2,122	516005	RETIREMENT-EE SHARE		1,012	1,012	1,798	1,798
1,601	3,000	2,650	516500	SOCIAL SECURITY		1,292	1,292	2,292	2,292
39,075	56,650	56,650		PAYROLL RELATED EXPENSES	0.15	28,504	28,504	46,198	46,198
				MATERIALS & SUPPLIES					
2,785	4,024	1,800	610950	ANALYTICAL TESTING		2,400	2,400	2,400	2,400
1,168	1,200	1,530	612100	DISCHARGE PERMIT FEE		1,700	-	-	-
1,000	2,500	2,500	613400	GARBAGE SERVICE		2,500	2,500	2,500	2,500
12,558	12,458	7,905	613900	INSURANCE PREM & SURETY		-	-	-	-



City of Ontario

Biennial Budget 2011-2013

225	-	-	615550	CONTRACT SERVICES	10,000	5,000	5,000	5,000
-	500	-	616550	UTILITY DAMAGE	500	500	500	500
1,609	2,000	1,609	617200	STORM DITCH MAINTENANCE	1,400	1,400	1,400	1,400
10,991	8,140	9,540	618300	VEHICLE REPAIR	9,000	9,000	9,000	9,000
6,470	9,196	3,969	618800	MAINTENANCE PARTS	8,500	8,500	8,500	8,500
-	89,970	89,970	693200	OH PAYMENT TO PW FUND	108,618	108,618	90,924	90,924
-	66,662	66,662	693400	COLLECTION/DIST PYMNT TO PW FD	69,286	66,213	66,213	66,213
36,807	196,650	185,485		MATERIALS & SUPPLIES	213,904	204,131	186,437	186,437
				CAPITAL OUTLAY				
-	-	11,520	719300	STRM-1-EMERGENCY REPAIR (FRCC)	-	-	-	-
-	-	11,520		CAPITAL OUTLAY	-	-	-	-
				TRANSFERS				
48,500	-	-	824012	TRANSF TO PW RESRV - STORM	-	-	-	-
14,346	14,700	14,352	834000	TRANSF TO STREET-FRAN FEE	14,348	14,352	14,352	14,352
62,846	14,700	14,352		TRANSFERS	14,348	14,352	14,352	14,352
				CONTINGENCY				
-	-	-	871000	OPERATING CONTINGENCY	-	-	-	-
-	-	-		CONTINGENCY	-	-	-	-
138,728	268,000	268,008	170	STORM	256,756	246,987	246,987	246,987